

# Saudade sim

Comp. Martin Grah, Arr. Martin Grah & Willy Kotoun - Januar 2024

Bass

2 *Intro 1*

6

10

14 *Intro 2*

18

22

26

30 *Vers*

34

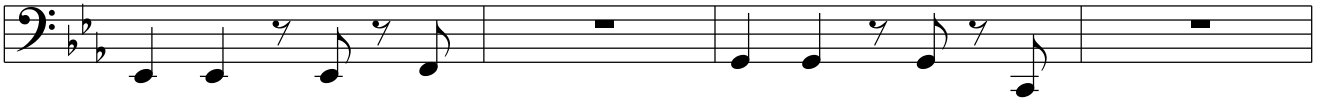
38

42

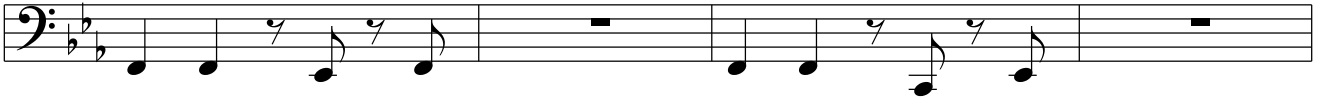
The image shows a bass line musical score for the piece 'Saudade sim'. The score is written in bass clef with a key signature of three flats (B-flat, E-flat, A-flat) and a 4/4 time signature. The piece is divided into several sections: an initial 2-measure section, followed by 'Intro 1' (measures 2-5), 'Intro 2' (measures 14-17), and 'Vers' (measures 30-33). The music consists of eighth notes and quarter notes, with some measures containing rests. The score ends with a double bar line at measure 42.

Chorus

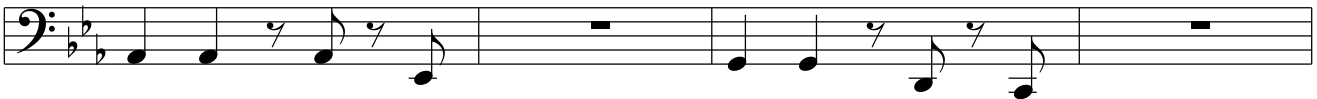
46



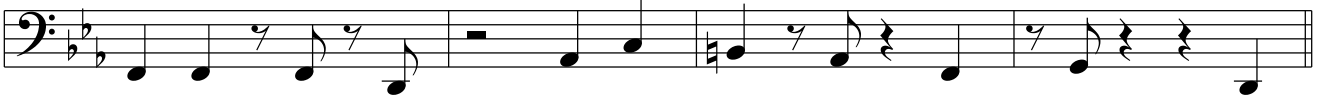
50



54

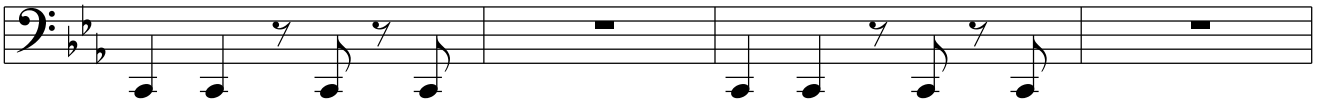


58

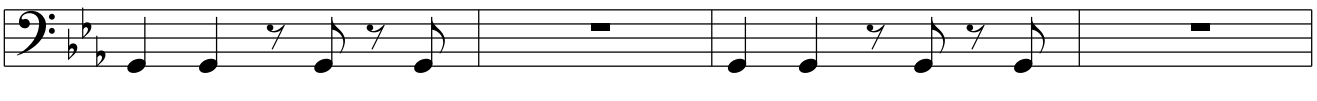


Tenor Variation

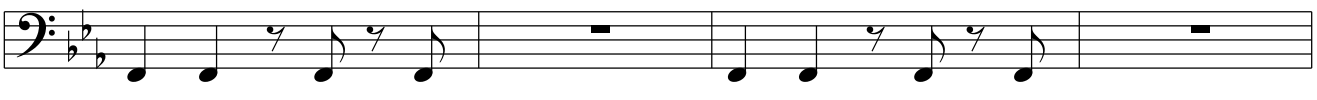
62



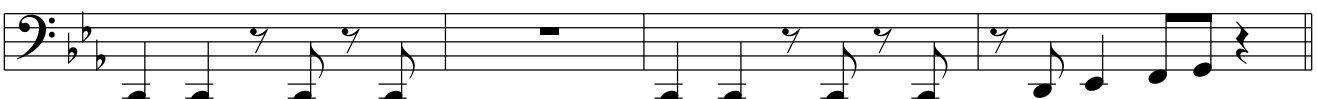
66



70

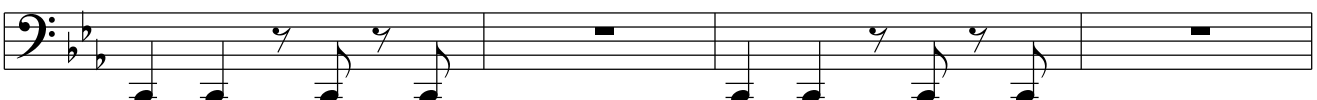


74

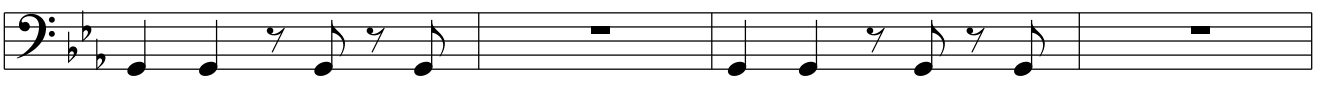


78

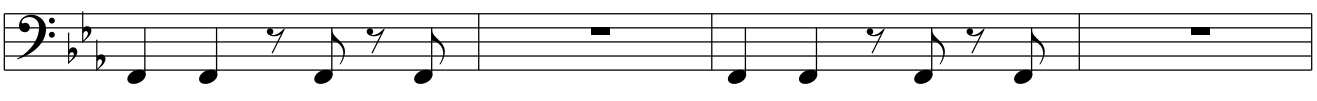
Second Variation



82

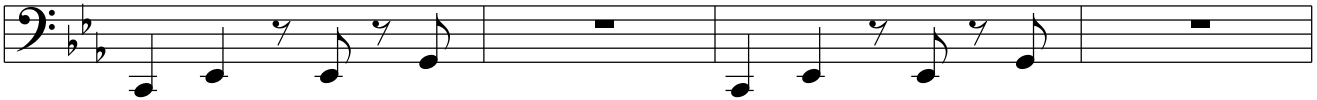


86

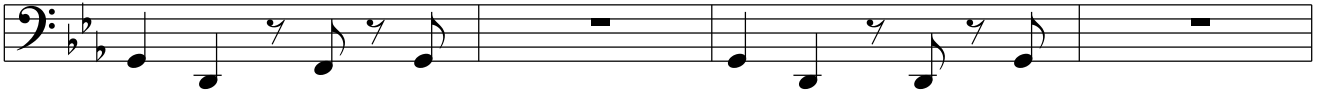


90



94 *Unisoso*

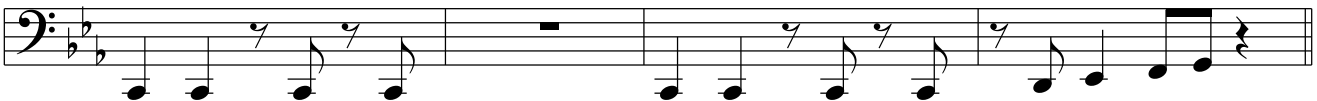
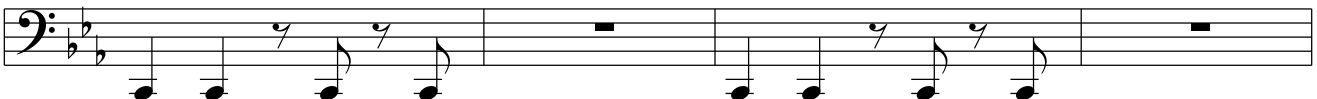
98



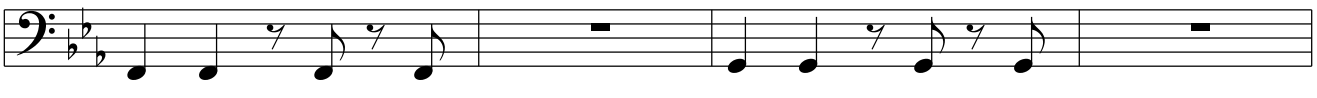
102



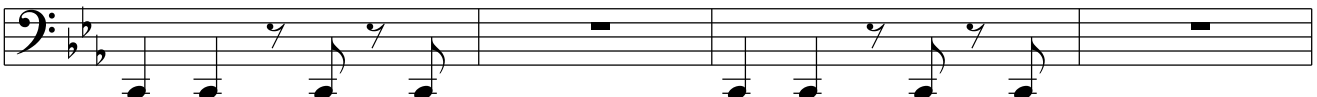
106

110 *Erneut Intro (etwas erweitert)*

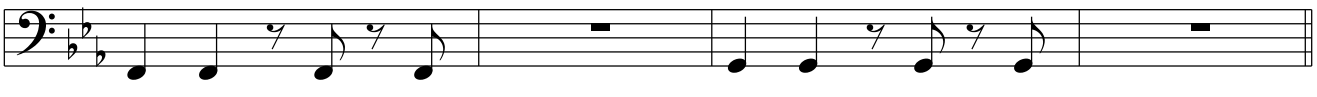
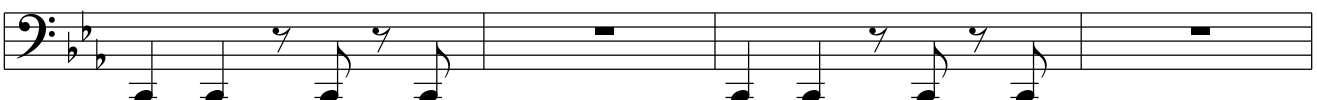
114



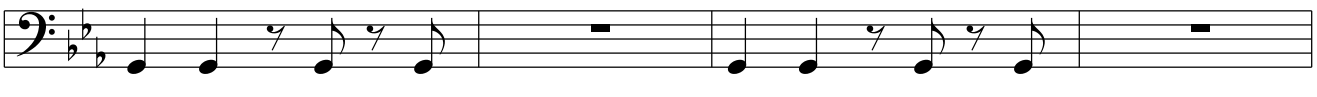
118



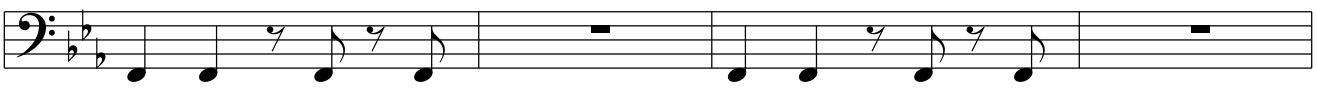
122

126 *Nochmal Intro 2*

130



134

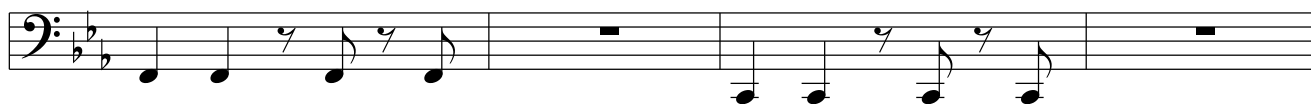


138



142

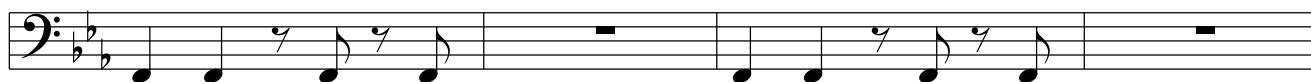
Vers



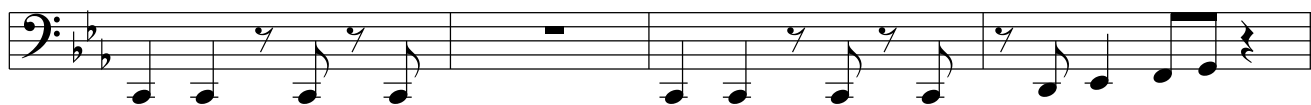
146



150



154

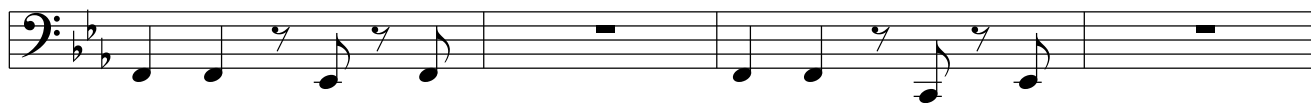


Chorus

158



162



166

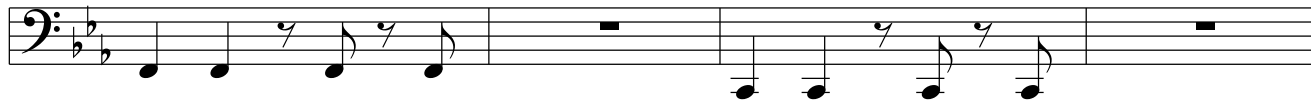


170



174

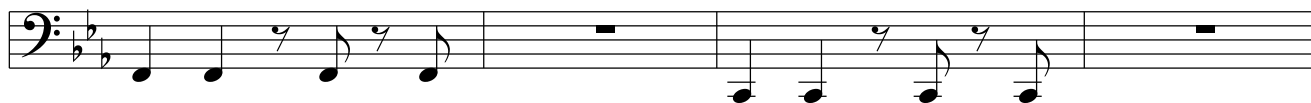
Vorschluss



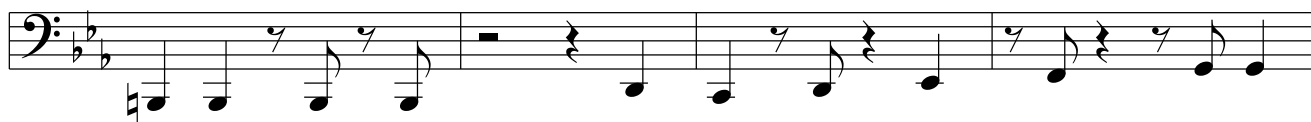
178



182



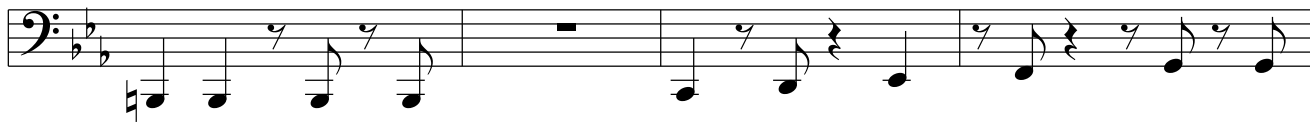
186



190



194



198

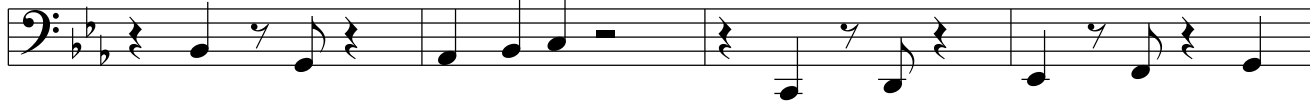


202

204 *Schluss*



206



210

